



LD635-5-1

●Specifications:

Wavelength: 635nm
 Power: 5mW CW
 Package: TO18

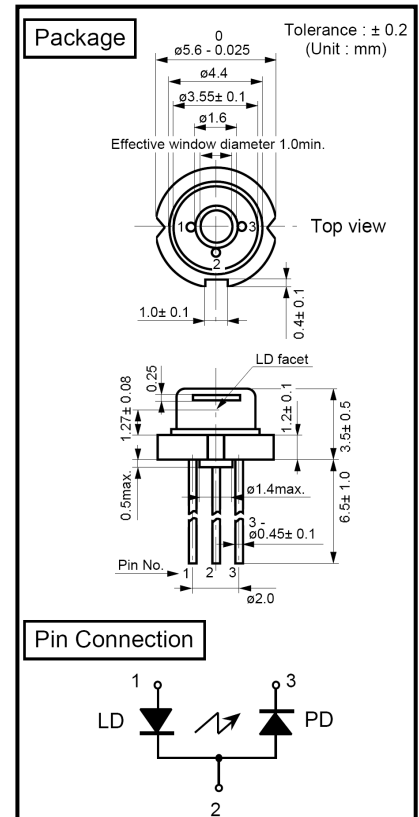
●Absolute Maximum Ratings($T_c=25^\circ\text{C}$):

Parameter		Symbols	Rated	Units
Light Output	CW	P_o	5	mW
Reverse Voltage	Laser	V_r	2	V
	PD	$V_r(\text{PIN})$	30	V
Operation Temperature		T_{op}	-10~+40	$^\circ\text{C}$
Storage Temperature		T_{stg}	-15~+85	$^\circ\text{C}$

●Electrical and Optical Characteristics($T_c=25^\circ\text{C}$):

Parameter		Symbols	Condition	Min.	Typ.	Max.	Unit
Lasing Wavelength		λ_p	$P_o=5\text{mW}$	630	635	640	nm
Threshold Current		I_{th}	CW	-	27	30	mA
Operating Current		I_{op}	$P_o=5\text{mW}$	-	35	40	mA
Operating voltage		V_{op}	$P_o=5\text{mW}$	-	2.2	2.5	V
Monitoring Output Current		I_m	$P_o=5\text{mW}$ $V_r=0\text{V}$	0.05	0.1	0.2	mA
Beam ¹⁾ Divergence	Parallel	$\theta_{//}$	$P_o=5\text{mW}$	6	7.5	11	deg.
	Perpendicular	θ_{\perp}	$P_o=5\text{mW}$	30	34	38	deg.
Slope Efficiency		η	-	0.5	0.6	-	mW/mA
Life Time (MTTF)					>4000		h

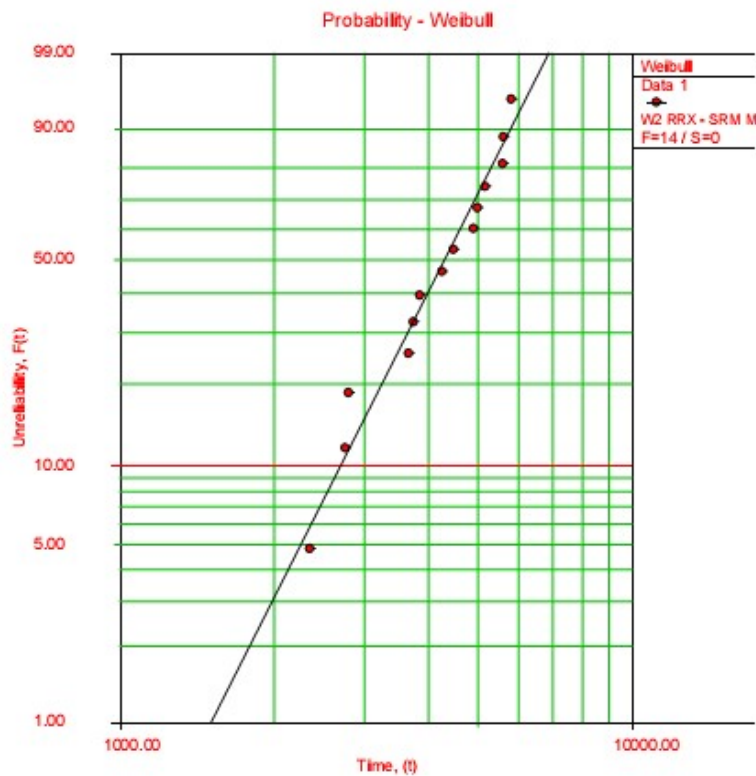
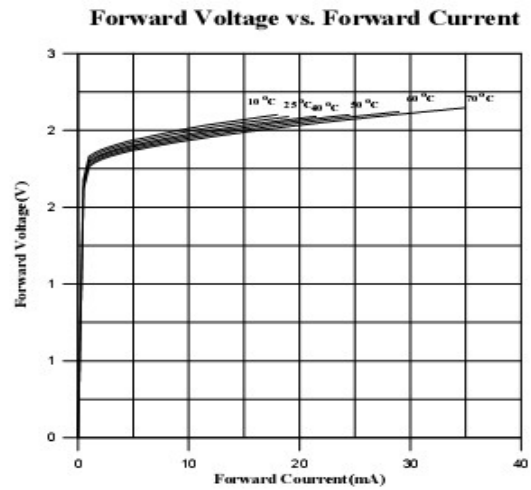
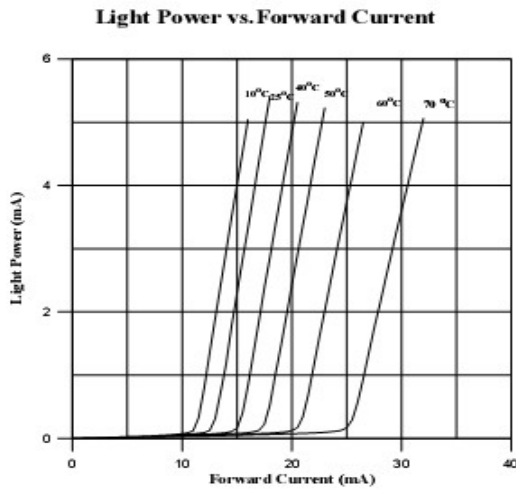
1) Full angle at half Maximum





Tel: (+86) 577-8181-0885
 Fax: (+86)577-6286-6900
 www.z-optics.com
 Sales@z-optics.com

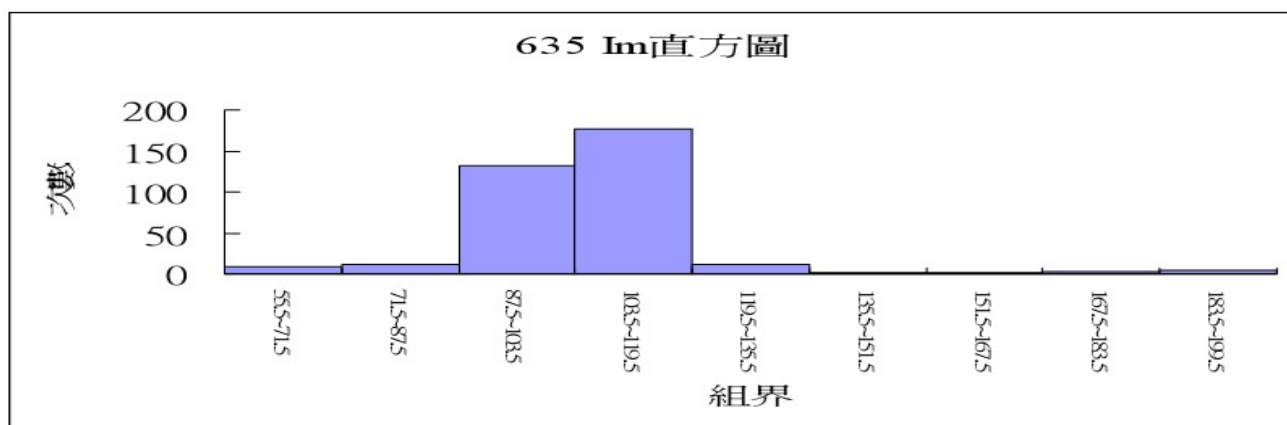
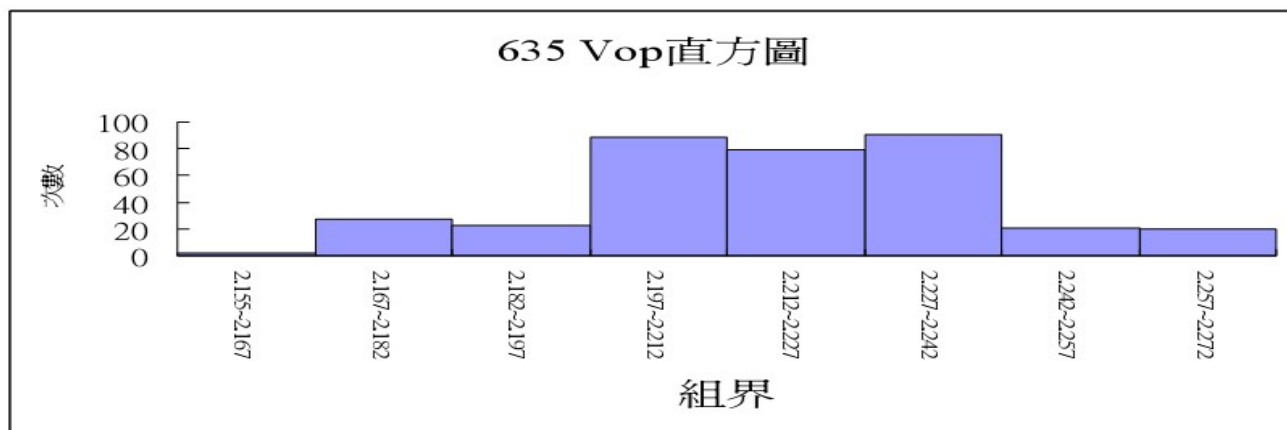
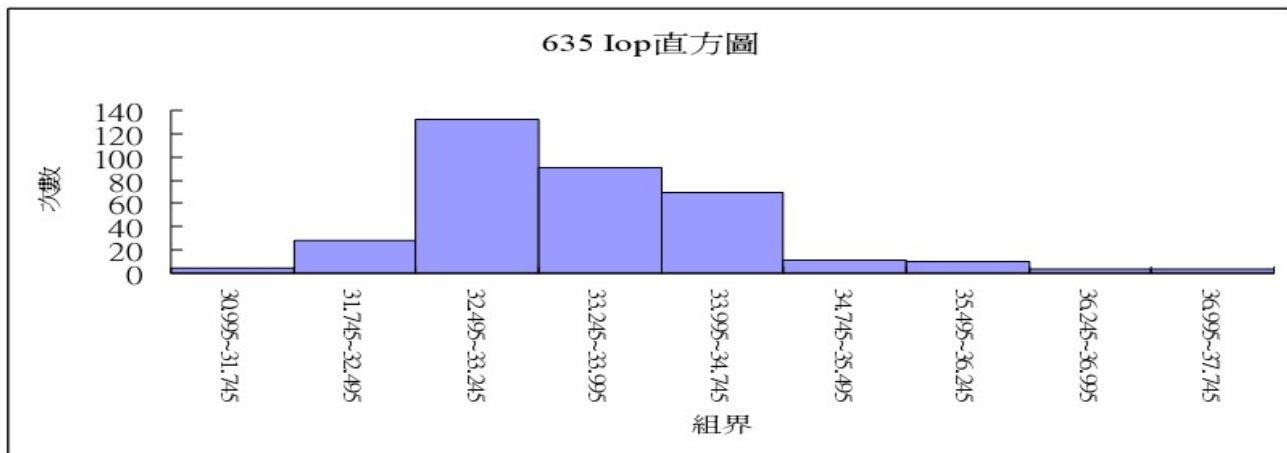
●Electrical and Optical Characteristics Curves($T_c=25^{\circ}\text{C}$):



Z-Optics Co., Ltd.
 Hailong Building C301, Xiaonan Road
 Wenzhou, Zhejiang Province
 325028, China
 Company Code: 3102282052763



Tel: (+86) 577-8181-0885
 Fax: (+86)577-6286-6900
 www.z-optics.com
 Sales@z-optics.com



Z-Optics Co., Ltd.
 Hailong Building C301, Xiaonan Road
 Wenzhou, Zhejiang Province
 325028, China
 Company Code: 3102282052763