



Laser Modules

Z-Optics provides visible and infrared laser modules with circular, elliptic, linear, and cross hair beam profiles in variety of packages and configurations at very competitive prices. Our engineers have optics, crystal and laser background, years experiences in laser module design and production, which make us competitive in integrating the optics, elctrics and laser together according the requirements of customers. We promise one week delivery time for samples and 1-2 weeks for mass order.



Capability:

- Super Linearity and Flatness - A line laser module is developed, with only <2mm height difference over 1x1m² flat surface, visible or infrared wavelength.
- Super Small Laser Module - A 650nm laser module is developed, with only 3.3mm diameter.
- Super directivity - the beam spot lies on the center line of the laser module by fine design and adjustment.
- A 532nm laser module is under developping, which has the widest operation temperature winodw, -10~+50 Celsiur degree.
- The most power saving 532nm laser module is under developping

Our Customers:



Economic Laser Module

Economic laser modules are designed for cost sensitive applications, which use plastic lenses, low power laser diodes, simple mechanic structures, the lifetime of the laser diodes normally are >5000h. Economic laser modules have the widest applications like survey, industry, medical, sensor, machining, toy, etc.

Standar Products:

Part No.	Wavelength (nm)	Power (mW)	Op. Cur. (mA)	Op. Volt. (V)	Package
LME635-A-B	635	<4, 8	<40	3~9	1, 2, 3
LME650-A-B	650	<4, 8	<30	3~9	1, 2, 3
LME780-A-B	780	<4, 8	<60	3~5	1, 2, 3
LME808-A-B	808	<150	<260	3~5	3
LME850-A-B	850	<4	<30	3~5	1, 2, 3
LME980-A-B	980	<40	<110	3~5	3

Other Wavelength and power not list here please contact us directly

Z-OPTICS Co., Ltd

Tel: +86-577-8181-0885 Fax: +86-577-8826-3363

sales@z-optics.com

www.z-optics.com

Order Information:

LME635-A-B

635 - Wavelength, unit in nm

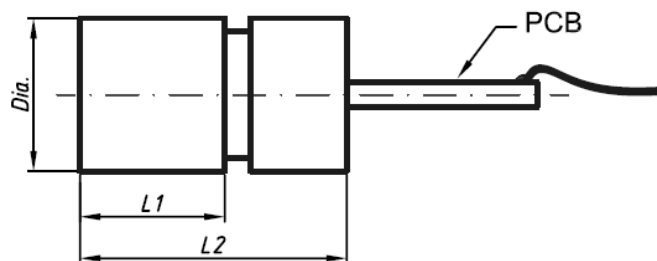
A - Power, unit in mW

B - Beam profile: 1 - dot, 2 - line, 3 - Cross line

Standard Package and Dimensions:

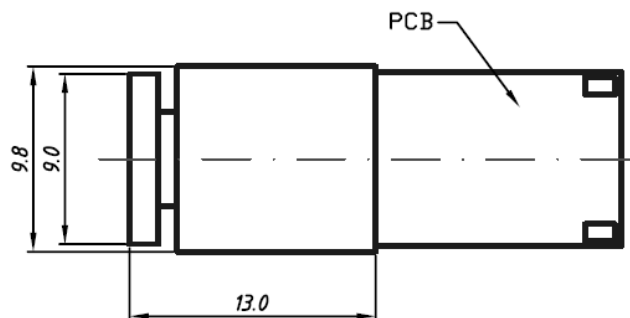
- Package not list here please provide drawings or samples, or contact us directly, we provide free design service.

Dimensions of Package 1



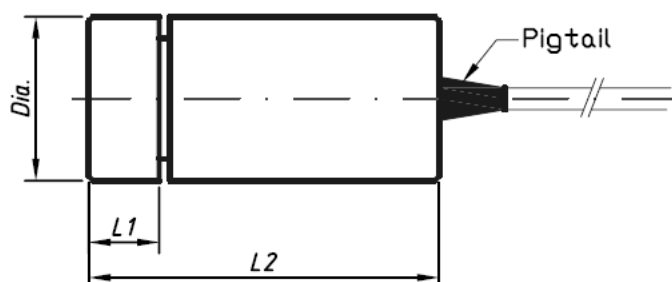
Diameter (mm)	L1(mm)	L2(mm)	Laser Module
4.0	-	7.5	650nm 5mW
6.0	5.7	10.5	635nm, 650nm, 780nm, 850nm, 5mW Spot beam
6.5	5.7	10.5	
7.0	5.7	10.5	
7.5	-	12.4	
8.0	-	12.4	

Dimensions of Package 2



Package for 635nm, 650nm, 780nm, 850nm 5mW laser modules Spot Beam

Dimensions of Package 3



Diameter (mm)	L1(mm)	L2(mm)	Laser Module
7.5	-	16.0	635, 650, 780, 850nm, 5, 10mW Spot beam
9.0	6.0	23	635, 650, 780, 850nm, 5, 10mW Line, Cross beam
12.0	5.0	36	980nm, 40mW Line, Cross beam



High Quality Laser Module

High quality laser modules are designed for quality sensitive applications, which use glass lenses or hybrid lenses(glass + plastic lens), high quality laser diodes(lifetime normally are 8000~10000h). High quality laser modules are used in survey, medical, sensor, machining, military, research, etc. Z-OPTICS provides ODM and OEM services for customers.

Standar Products:

Part No.	Wavelength (nm)	Power (mW)	Op. Volt. (V)	Package	
				Dot, Line	Cross Line
LMQ532-A-B	532	<1, <5, <10, <15, <30, <50, <100, <150, <200	3~5	Φ11.8x60 Φ16x60 Φ20x70 90x40x30	Φ12x60 Φ24x60 Φ30x110 160x55x42
LMQ635-A-1	635	<3, <5, <6, <12, <15, <22, <25	3, 4.5, 5, 6	Φ8x22(dot)	Φ12x36
LMQ635-A-2	635	<3, <5, <6, <14, <16, <22		Φ9x35	Φ12x40
LMQ635-A-3	635	<2.5, <4.5, <7, <9, <12, <15		Φ11x40	Φ16x40
LMQ650-A-1	650	<3, <6, <12, <18, <30, <70, <120, <170		Φ16x40	Φ16x55
LMQ650-A-2	650	<3, <6, <12, <18, <30, <70, <120, <170		Φ16x55	Φ22x60
LMQ650-A-3	650	<2, <5, <8, <18, <30, <70, <120, <170		Φ22x60	Φ22x85
LMQ808-A-1	808	<60, <140, <400, <650, <1600, <4200		Φ22x85	Φ22x91
LMQ980-A-1	980	<40, <240, <650, <1400		Φ26x100	Φ26x110
*LMQ1064-A-1	1064	<5, <10, <50	3~5	Φ11.8x60	

*LMQ1064-A-1 is a single frequency DPSS laser module
Other Wavelength and power not list here please contact us directly

Main Specifications:

Beam Divergency (spot laser):	0.2~1.5mrad(635nm, 650nm, 808nm, 980nm) 1.5~2.0mrad(532nm, 1064nm)
Spot Size @ 3m (spot laser)	<1mm
Fan Angle (line laser):	10°~120°
Linearity (line laser):	<1/8000
Line Width @ 3m (line laser):	<1mm
Linearity (cross laser):	<1/5000
Verticality (cross laser):	<+/-1.5
Operation Temperature:	-10~+50°C
Storage Temperature:	-40~+85°C

Order Information:

LMQ532-A-B
532 - Wavelength, unit in nm
A - Power, unit in mW
B - Beam profile: 1 - dot, 2 - line, 3 - Cross line